

**Motic®**

MORE THAN MICROSCOPY



# B1 Elite Series

UPRIGHT BIOLOGICAL MICROSCOPES

DESIGNED FOR EFFICIENCY AND ENDURANCE



# B1 Elite Series



Monocular,  
Binocular or  
trinocular head



Quadruple  
nosepiece



Semi-Plan  
objectives



Rackless  
mechanical stage



Coaxial focusing  
coarse & fine



LED  
illumination



Motic's B1 series has long been a pillar of reliable and competitive microscopy for basic work in biology and medicine. The Semi-Plan Achromat objectives, mounted in a 4-fold nosepiece, are used to examine transparent samples, such as sections and smears. The built-in rackless stage with sample holder enables a safe x/y movement, especially for inexperienced users. All B1 models offer a 3W LED illumination system, as well as a focusable 1.25 N.A. Abbe condenser, which carries an iris diaphragm to contrast native and weakly stained samples. Phase contrast is possible by the optional Ph10X/0.25 and Ph40X/0.65 objectives and the respective plug-in Phase attachments. The addition of polarization contrast for the examination of urine sediments can be done easily.

# Make documentation and photography a snap



HDMI



USB



Wi-Fi



RJ-45

## DATA TRANSFER



## SOFTWARE SOLUTIONS



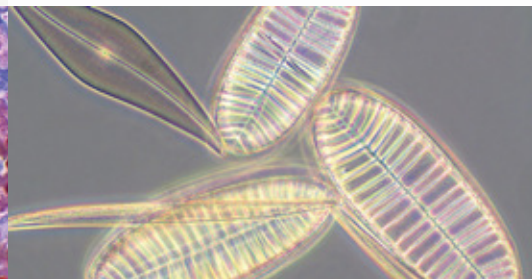
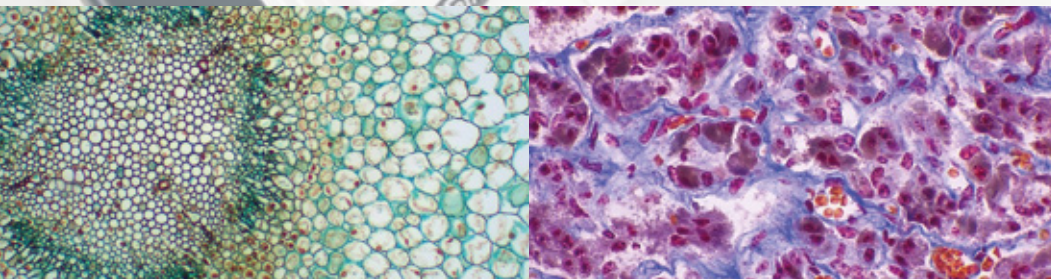
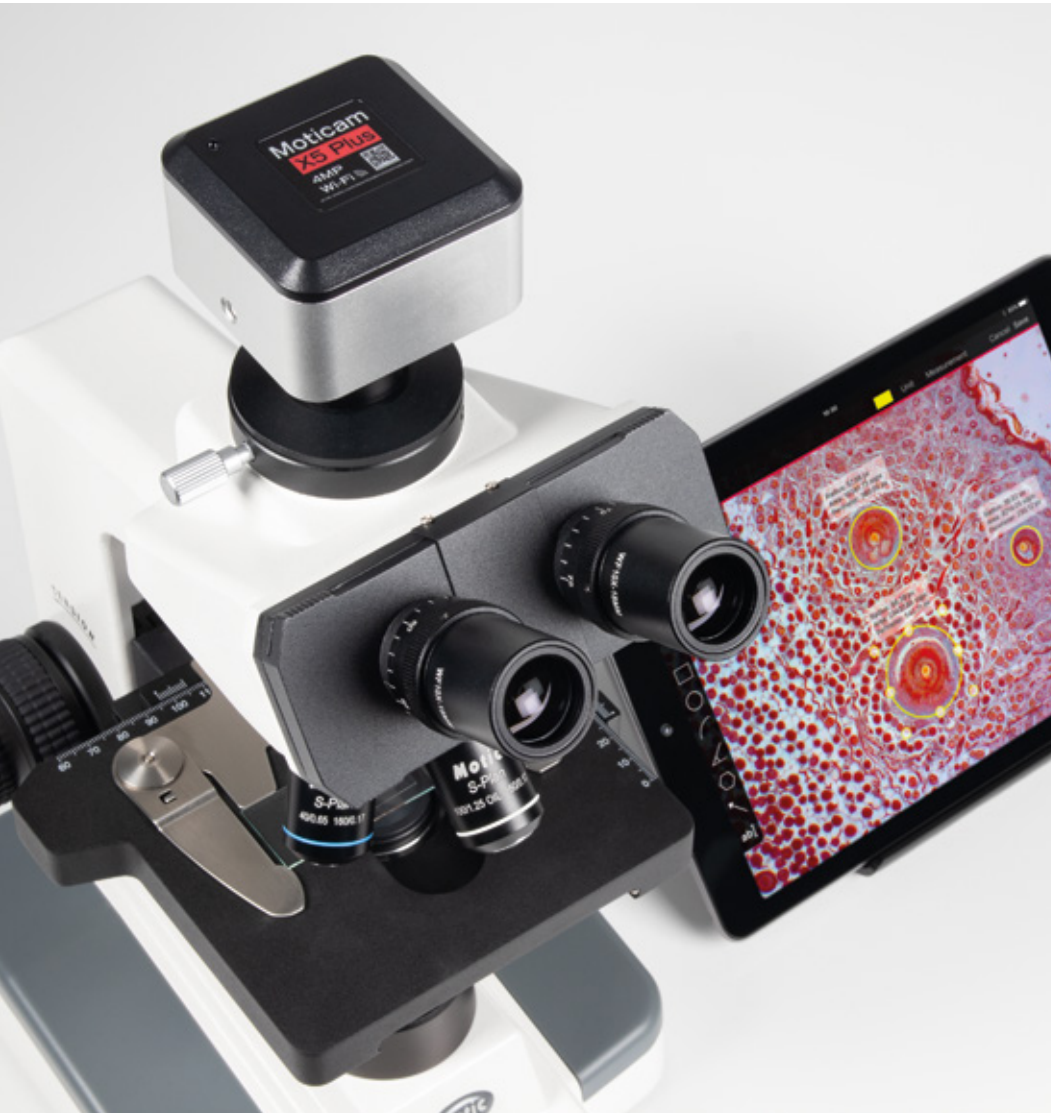
MotiConnect App  
for mobile devices



Motic Images Plus and  
MotiConnect for computers



Embedded App / Software to  
work with screens and projectors



Get the most out of your lab with Moticam's digital solutions. Display your samples on your computer, tablet, smartphone or using a TV screen or projector and view, capture, edit, measure, create reports, and easily share your work with anyone in just a few clicks. The software solutions included in our packages feature a user-friendly interface, making for a collaborative environment by enabling effortless data sharing, encouraging teamwork, and fostering collective learning experiences.

Visit [www.moticamseries.com](http://www.moticamseries.com) to discover all Moticam solutions



## Technical Specifications



Name	B1-211E-SP	B1-220E-SP	B1-223E-SP
Optical system	Finite optical system, 160mm		
Observation tube	Monocular head	Binocular head, sliding type	Trinocular head, sliding type
Inclination	45° inclined, 360° rotating		30° inclined, 360° rotating
Trinocular light split	-		100:0:0:100:30:70
Interpupillary distance	55-75mm		
Diopter adjustment	On both tubes, +/- 5 diopter		
Eyepieces	Widefield WF10X/18mm		
Nosepiece	Quadruple		
Objective classification	SP Semi-Plan Achromatic, DIN		
Objectives Standard Config.	4X/0.10 (WD 17.9mm), 10X/0.25 (WD 5.3mm), 40X/0.65/S (WD 0.61mm), 100X/1.25/S-Oil (WD 0.165mm)		
(4X, 10X, 40X) Configuration	4X/0.10 (WD 17.9mm), 10X/0.25 (WD 5.3mm), 40X/0.65/S (WD 0.61mm)		
(4X, 10X, 40X, 60X) Configuration	4X/0.10 (WD 17.9mm), 10X/0.25 (WD 5.3mm), 40X/0.65/S (WD 0.61mm), 60X/0.85/S (WD 0.12mm)		
Objective mounting thread	W 4/5"x1/36" (RMS standard)		
Stand type	Upright		
Stage	Mechanical stage with built-in low position rackless coaxial stage control and sample holder		
Stage size	140x135mm		
Travel range X&Y	76x40mm		
Condenser	Focusable Abbe Condenser N.A. 1.25		
Diaphragm	Iris diaphragm		
Focus mechanism	Coaxial coarse and fine focusing system with tension adjustment		
Fine focus precision	2µm		
Focusing stroke	27mm		
Upper limit stop	Upper limit stop preset but adjustable		
Transmitted illumination	LED 3W with intensity control		
Transformer	External		
Power supply	110-240V (CE)		
Accessories included	Dust cover, immersion oil (5ml)		
Dimensions LxWxH	245x190x380mm		
Net weight	6.8kg		
Notes	Transport and storage case		
<b>CONTRAST TECHNIQUES</b>			
Brightfield	Brightfield		
Phase contrast	Optional plug-in		
Polarization	Optional add-on		
Darkfield	Optional plug-in		

Design Change: The manufacturer reserves the right to make changes in instrument design in accordance with scientific and mechanical progress, without notice and without obligation.

\*CCIS® is a trademark of Motic Incorporation Ltd. Motic Incorporation Limited Copyright © 2002-2023. All Rights Reserved.

Created and designed in Barcelona (Spain) by Motic Europe, January 2023.  
Photomicrographies courtesy of ©Willem Cramer and ©MoticEurope

 ISO 9001:2000, ISO 14001:2004 and ISO 13485 Certified.

### Motic Europe

#### Motic Deutschland (Germany)

Charlotte-Bamberg-Str. 6, 35578 Wetzlar, Germany  
Tel: +49 644 121 0010

#### Motic Europe (Spain)

C. Les Corts 12, Pol. Ind. Les Corts.  
08349 Cabrera de Mar, Barcelona, Spain  
Tel: +34 93 756 62 86